

**Subject:** Kia ora Carol read the June Quality Pānui!  
**Date:** Friday, 13 June 2025 at 12:09:32 PM New Zealand Standard Time  
**From:** The Royal New Zealand College of General Practitioners  
**To:** Carole Unkovich | PMAANZ Admin

## Quality Pānui – June 2025



### Welcome to the June Quality Pānui!

This month we're highlighting:

- Quality Programmes team spotlight: Lucy Wass
- The latest Quality statistics
- New Foundation Standard guidance for 9.2 and 12.1
- Other updates and works in progress
- What is the CQI reaccreditation module?
- Can I certify/accredit multiple sites?
- Equity reaccreditation pilot update
- Amtech Medical voucher winner – University of Canterbury Health Centre
- Assessor spotlight: Ann Rose
- Equity and CQI initiatives webinar
- GP25: Conference For General Practice
- Membership fees
- Research funding - closing 25 June 2025

Please email us at [quality@rnzcgp.org.nz](mailto:quality@rnzcgp.org.nz) if there are any items you would like us to cover in the next newsletter. We enjoy receiving your feedback and if there's anything we can assist you with please let us know.

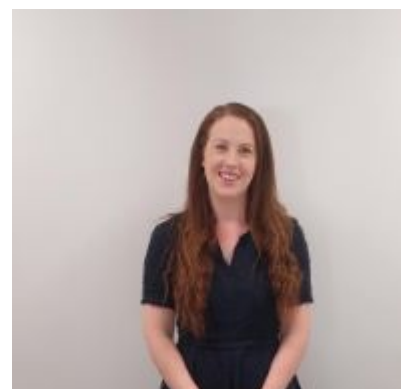
### The Quality Programmes Team

## Quality Programmes team spotlight: Lucy Wass

You know our names, and hear our voices on the phone, but do you know who we are?

Our small team of four have completed short interviews so you can learn more about us, our adrenaline-filled skydives, travels to Japan, other careers and so much more!

The second of our four interviews is with Lucy Wass, the Senior Quality Programmes Advisor.



Read Lucy's interview [here](#).



## The latest Quality statistics

The Quality Programmes team recently completed a mid-May report on certification and accreditation statistics.

One standout figure from the report is especially noteworthy: 90% of all registered practices are now certified with the Foundation Standard.

The data in this table is a testament to the dedication and hard work of both assessors and practices across the motu.



## New Foundation Standard guidance for 9.2 and 12.1

### **Indicator 9.2: Standing orders – and unregulated workers**

The College has developed [new guidance](#) to help general practices understand the appropriate use of standing orders with unregulated healthcare workers, including healthcare assistants and community health workers.

While it is legally permitted for these team members to administer or supply medicines under a standing order, it is not commonly done due to the increased clinical risk and the additional responsibility placed on the issuer. The guidance outlines the key risks and offers strategies to help mitigate them, ensuring patient safety remains the highest priority.

This guidance is designed to help practices make informed, safe decisions when considering the use of standing orders with unregulated team members.

### **Indicator 12.1 Infection control – reprocessing re-usable medical devices (RMDs):**

A new standard for the reprocessing of reusable medical devices, **AS 5369:2023**, has been mandated by the Ministry of Health for use across New Zealand's health sector, replacing the previous AS/NZS 4815:2006 standard. This updated Australian standard sets out safe and effective reprocessing requirements for a wide range of settings, including general practice.

To support practices in meeting these new requirements, the College has developed a policy template and guidance tailored specifically for general practice. By adopting this template and ensuring a documented reprocessing process is in place, practices can have confidence in their compliance with AS 5369:2023.

## Other updates and works in progress

### 11.6 Residual current devices (RCDs) – and body protected areas

Electrical compliance can be a complex area for general practices. To support practices in understanding their obligations and how to meet them, the College, working with an expert in electrical compliance, has developed updated guidance tailored to general practice settings.

The new guidance will cover:

- What the mandatory electrical compliance requirements are and how to meet them
- How to identify and manage body-protected areas within medical centres
- Practical and cost-effective ways to ensure compliance
- Tips for working effectively with electricians to ensure a safe and compliant environment

The guidance, intends to give practices more clarity and confidence when navigating electrical compliance in general practice settings.

### 13.3 Adverse event reporting – new Guidance to support general practice to transition to the 2023 National Adverse Events Reporting Policy

Te Tāhū Hauora (HQSC) has released the [2023 National Adverse Events Reporting Policy: Healing, Learning, and Improving from Harm](#), replacing the 2017 version. This updated policy places greater emphasis on relationships, learning and continuous improvement following adverse events.

To support general practices in transitioning to the new policy, the College and Te Tāhū Hauora have developed two key resources:

- An example of a policy/procedure to help guide practices to align their local policy with the 2023 National Adverse Events Policy.
- An Assessment Tool: Practices and assessors can use this tool to ensure the practices local Adverse Events Policy and procedure aligns with the new 2023 National policy.

## What is the CQI reaccreditation module?

We've received a few queries about what happens after a practice gains CQI module accreditation.

Once accredited, a practice holds CQI module accreditation for three years. At any time during this period, the practice can purchase and begin work on the CQI reaccreditation module.

Please note that the CQI reaccreditation module is a separate and distinct module from the original CQI module.

You can read more about the new module [here](#).

**The original CQI module is still available for any practices who have not yet completed it.**

## Can a practice certify/accredit multiple sites?

We often receive questions about multiple sites, Kōpara practices, and 'satellite' clinics, so we've pulled together answers to some of the most common ones.

As assessors are frequently asked about these arrangements, we felt it was important to share the key details in this pānui as well.

### **Does a practice need an HPI number to register with the College?**

The College requires registering practices to have their own HPI Facility ID, as certification is issued for the physical site, not the business entity.

If a practice is unsure whether they have an HPI Facility ID, or what their ID is, they can visit the [Health New Zealand website](#) and view the full list.

### **Can a practice register only the main site and have the smaller sites automatically receive certification or accreditation?**

Even if multiple practices share the same policies and procedures, many criteria in the Foundation Standard relate specifically to the physical premises of each site.

Examples include having all required equipment and medicines as outlined in Appendix 1, appropriate signage, monitoring of waiting areas, an approved fire evacuation scheme, and the provision of an accessible toilet, among other site-specific requirements.

### **Does the College still recognise 'satellite' practices?**

In 2020, the 'satellite' category was removed due to the increasing diversity in practice types.

Small practices that are also rural and/or serve high-needs populations may now qualify as Kōpara practices. These practices receive a 50% subsidy on the annual Foundation Standard fee and on Cornerstone module purchases. Practices meeting the criteria at the time were granted this status automatically in 2020.

If a practice believes it may qualify, they can click [here](#) to learn more and check the eligibility criteria.

### **If a practice doesn't have its own HPI number, can they still complete the Quality Programmes?**

If a practice does not have an HPI Facility ID, they should contact their PHO to confirm whether completing the Foundation Standard is required.

There are many different types of practices, such as nurse-led clinics or overflow rooms, and in some cases, a site may receive capitation funding without needing to complete the Foundation Standard.

## Equity reaccreditation pilot update

We're pleased to report that the pilot practices have completed the Equity reaccreditation module on schedule, and the assessment process is now underway.

Once we receive and review feedback from the pilot, we'll refine the module to enhance its usability and effectiveness.

We remain on track to officially launch the Equity reaccreditation module in July 2025. If you're attending [GP25: Conference for General Practice](#), be sure to visit our stand to learn more about the module and what it means for your practice.

## Amtech Medical voucher winner – University of Canterbury Health Centre

The Quality Programmes team recently wrapped up a promotion that ran through to March 2025.

Practices that completed accreditation for either the Continuous Quality Improvement (CQI) or Equity module were entered into the draw to win one of five \$700 Amtech Medical vouchers for their practice.

Congratulations to the University of Canterbury Health Centre, who won the final voucher for completing their Equity module accreditation!

## Assessor spotlight: Ann Rose

Ann is a College-endorsed assessor for both the CQI and Equity modules.

In this feature, Ann reflects on more than a decade of assessing experience. You'll also get a glimpse into her life beyond general practice, including time spent at the family bach at Lake Clearwater (Te Puna a Taka), her previous careers, and plenty of other great stories along the way.

[Read Ann's full interview.](#)



## Equity and CQI initiatives webinar



Sandy Bhawan and Lucy Wass recently presented a webinar titled "Equity & Continuous Quality Improvement Initiatives Across Aotearoa", delivered in partnership with Collaborative Aotearoa.

Watch the webinar [here](#).

[GP25: Conference for General Practice](#)



## GP25: CONFERENCE FOR GENERAL PRACTICE

[GP25: Conference for General Practice](#) is taking place from Thursday 24 to Saturday 26 July 2025 at the Te Pae Convention Centre in Ōtautahi Christchurch. We hope you can join us!

The Quality Programmes Team will be delivering two oral presentations in addition to hosting a workshop.

View the full [conference programme](#).

A banner for the GP25 Conference for General Practice 2025. On the left, a dark blue box contains the GP logo, the text 'CONFERENCE FOR General Practice 2025', the dates '24 – 26 July 2025', the location 'Te Pae Christchurch Convention Centre', and the website 'generalpractice.org.nz'. To the right is a photograph of people at a conference. Below the photo, an orange banner reads 'Registrations open' in white text.

**GP25**  
CONFERENCE FOR  
General Practice  
2025

**24 – 26  
July 2025**

Te Pae Christchurch  
Convention Centre

[generalpractice.org.nz](http://generalpractice.org.nz)

**Registrations open**

## Membership and Foundation Standard Licence fees

If your practice has recently paid (or plans to pay) membership fees on behalf of your GPs, please email the remittance advice to [customers@rnzcgcp.org.nz](mailto:customers@rnzcgcp.org.nz) or provide the member IDs to a member of the Finance Team. This helps ensure payments are allocated correctly and avoids unnecessary follow-up messages being sent to your doctors. Thank you for your understanding and assistance.

When paying your practice's 2025–2026 Foundation Standard licence fee, please include both your **customer number and invoice number** as the bank payment particulars and reference.

## Research funding open

A banner with a dark green background and white text. It promotes research funding opportunities. The text includes the title 'Fund your research', the deadline 'Applications for the College's second of three funding rounds are open until 25 June.', the purpose of the funding, and the typical grant amounts. At the bottom, there is a green button with 'Apply here' and a link for more information.

**Fund your research**

Applications for the College's second of three funding rounds are open until **25 June**.

The College funds research and education that benefits general practice, rural general practice, and rural hospital medicine.

Grants are typically \$5,000 – \$20,000 for individuals but up to \$40,000 can be awarded.

**Apply here**

For more information or assistance with the application process visit [rnzcgcp.org.nz/our-voice/fund-your-research/](http://rnzcgcp.org.nz/our-voice/fund-your-research/)



The Royal New Zealand  
College of General Practitioners  
Te Whare Tohu Rata o Aotearoa

The Royal New Zealand College of General Practitioners  
Level 4, 50 Customhouse Quay, Wellington 6011  
PO Box 10440, Wellington 6140  
Tel: 0800 965 999  
[www.rnzcgcp.org.nz](http://www.rnzcgcp.org.nz)

