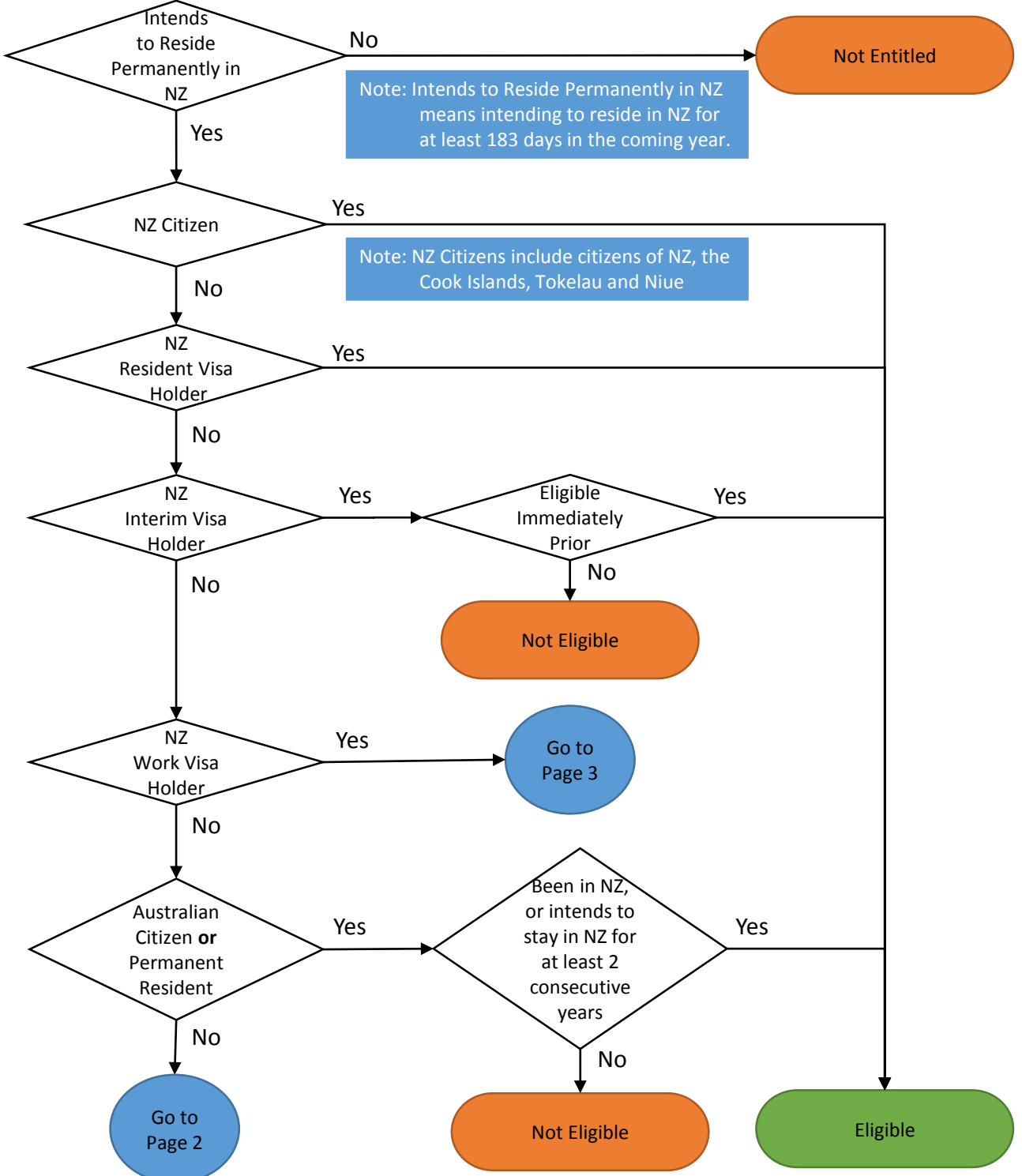


# PHO Enrolment Eligibility Checklist

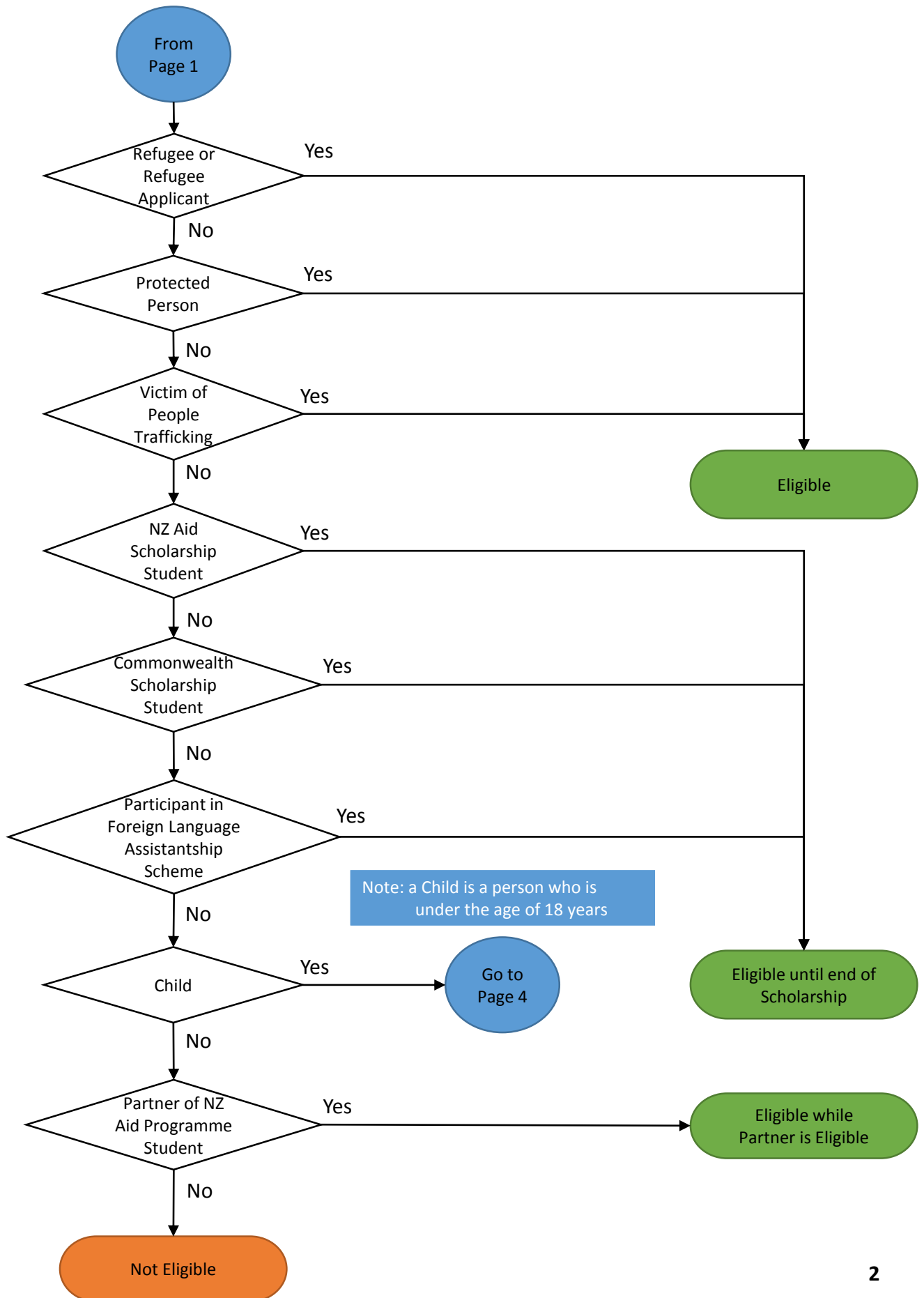
Person applies to be enrolled as a patient

Note: To be fully eligible, a person needs to be both **Entitled AND Eligible**.  
Entitled relates to residing in NZ and Eligible relates to meeting one of the eligibility criteria

Note: NZ Defence Force members and Department of Corrections prisoners (including remand) are not entitled to be enrolled, as they are provided for through other funding agreements.

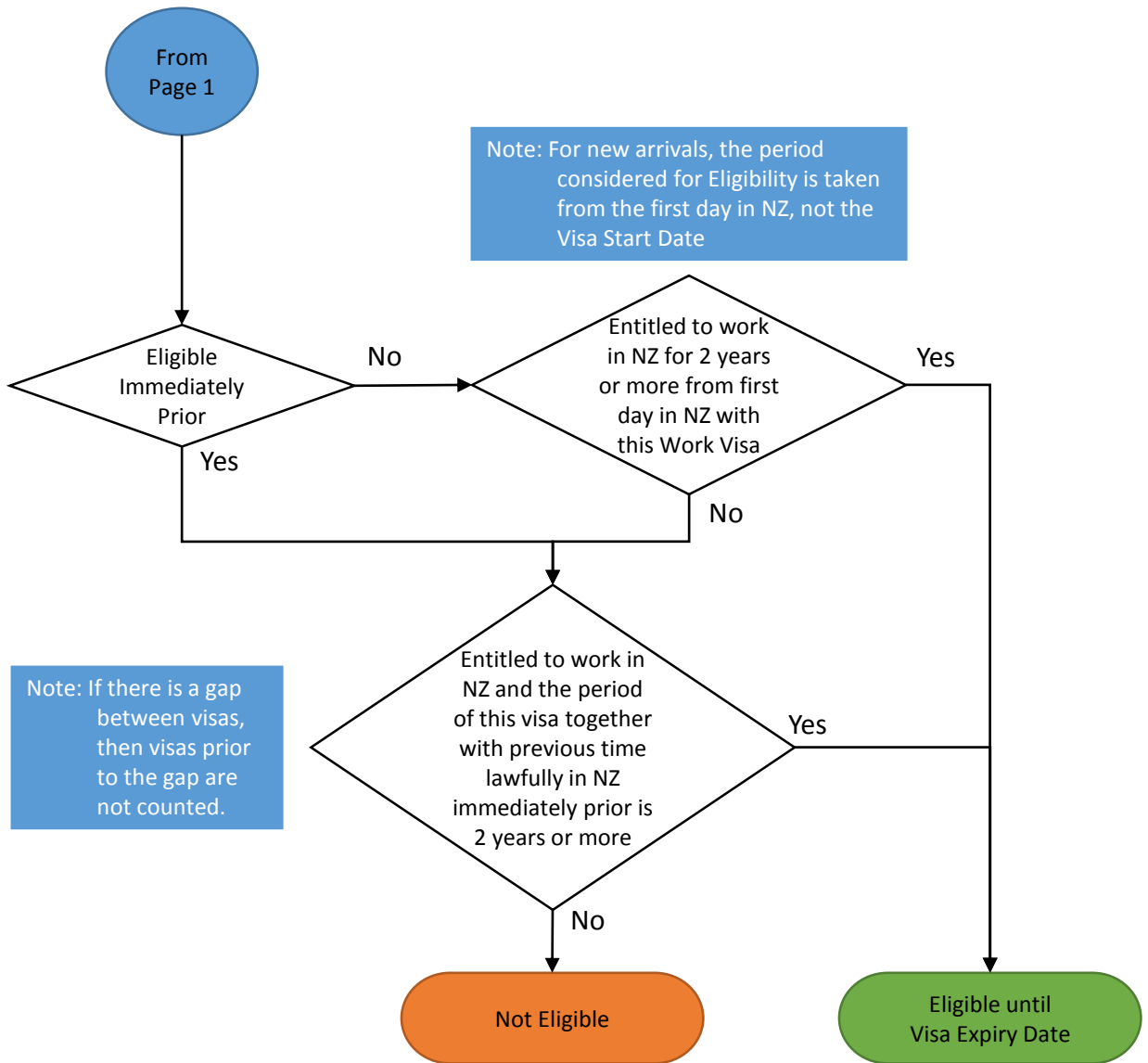


# PHO Enrolment Eligibility Checklist (Page 2):



# PHO Enrolment Eligibility Checklist (Page 3):

## Work Visa Holders



# PHO Enrolment Eligibility Checklist (Page 4): Children

