

Te Whatu Ora
Health New Zealand

NIP Organisational Chart

A decorative background pattern on the right side of the slide. The top half features a repeating geometric motif of concentric diamonds and zig-zags in a light blue color against a dark blue background. The bottom half consists of a dense, vertical arrangement of thin, light blue lines that resemble a fringe or a textured fabric.

Interim Director Prevention

National
Screening Unit

Operations

National
Contracts,
Quality,
Workforce &
Welfare

Clinical

Insights,
Analytics &
Reporting

Communications
& Engagement

Office of the
Director

Equity

Strategy &
Planning

Vaccine Safety &
Surveillance

Key Contacts:

immunisation@health.govt.nz

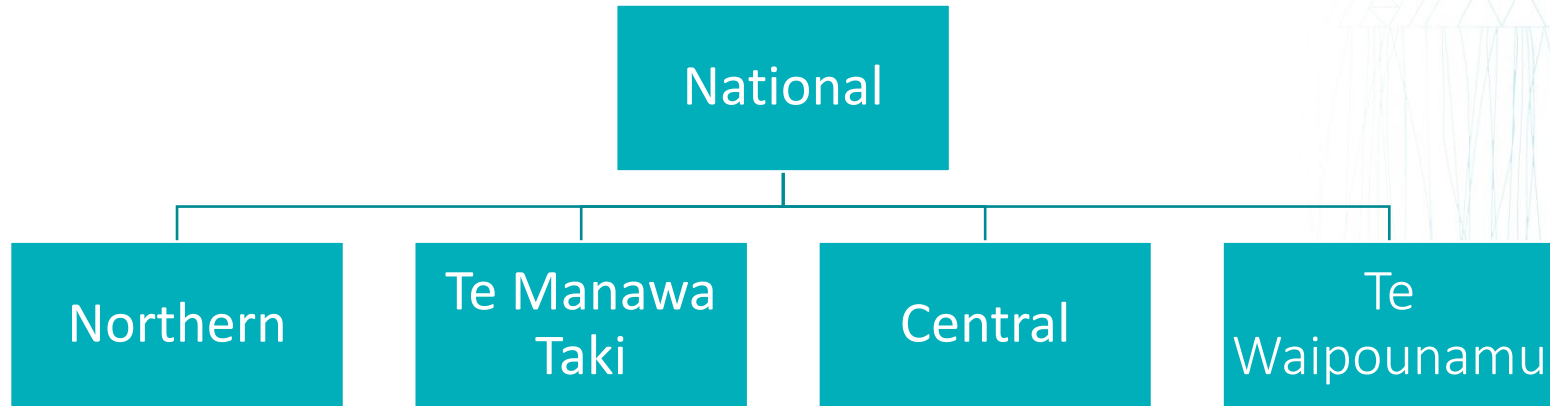
NIPAnalytics@health.govt.nz

NIPVaccineReporting@health.govt.nz

nsu@health.govt.nz

air.engagement@health.govt.nz

Immunisation Taskforces



National taskforce

This taskforce aims to utilise the learnings established by the COVID-19 response to increase influenza, childhood immunisations and MMR vaccine uptake among young people, including community-based provider models that have reached out to Māori, Pacific, rural and other population groups.

You can find out more information at <https://www.tewhatauora.govt.nz/whats-happening/work-underway/taskforces/#immunisation-taskforce>

Regional taskforces

Contact your local Health District's immunisation lead for information