

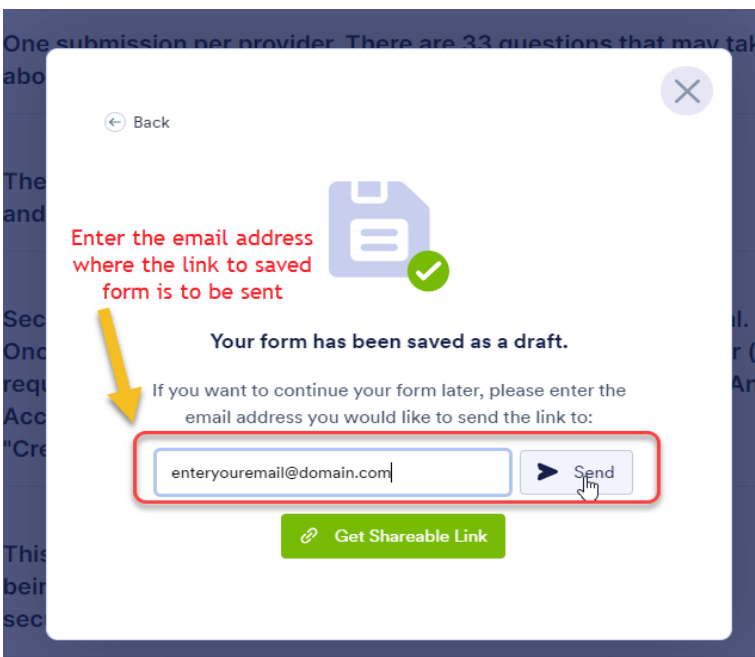
# How to save your assessment to continue later

Step 1: Select the 'Save' button on your form. See below.

This assessment is anonymous. Only high level information is being collected. It is safe to provide/confirm your current cyber security state.

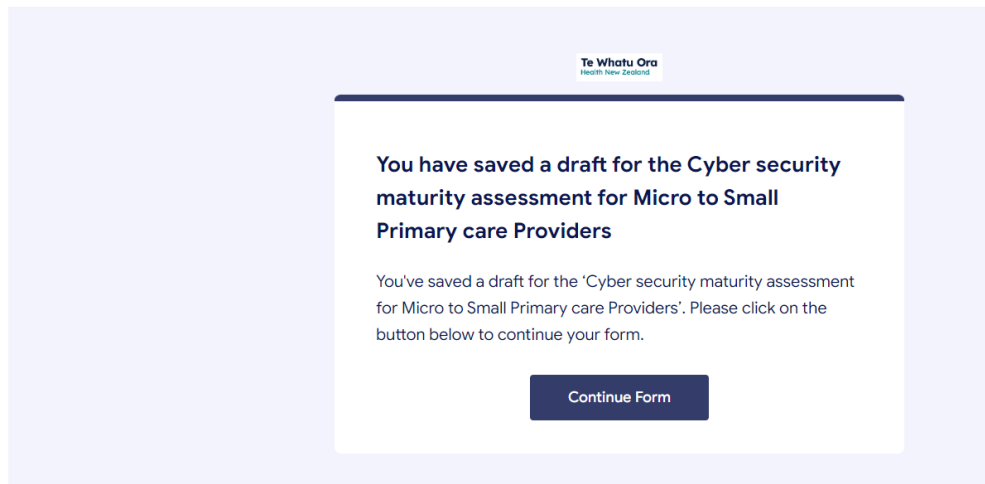


Step 2: Choose 'Skip Create an Account'



**You will then receive an email with the link to your form. All your entries will be saved.**

Te Whatu Ora - Health New Zealand <noreply@formresponse.com>  
to me ▾



**Please note – The form will start on the page that you last completed. The previous entries will remain saved, but you can press ‘back’ to go back and change any entries.**

## How to share your form

**Before you share – make sure to save your assessment using steps 1,2 & 3**

**Remember the form will start from the last page you completed. The previous entries will be saved, but earlier entries can be changed if required.**

### Step 1: Press ‘Save’

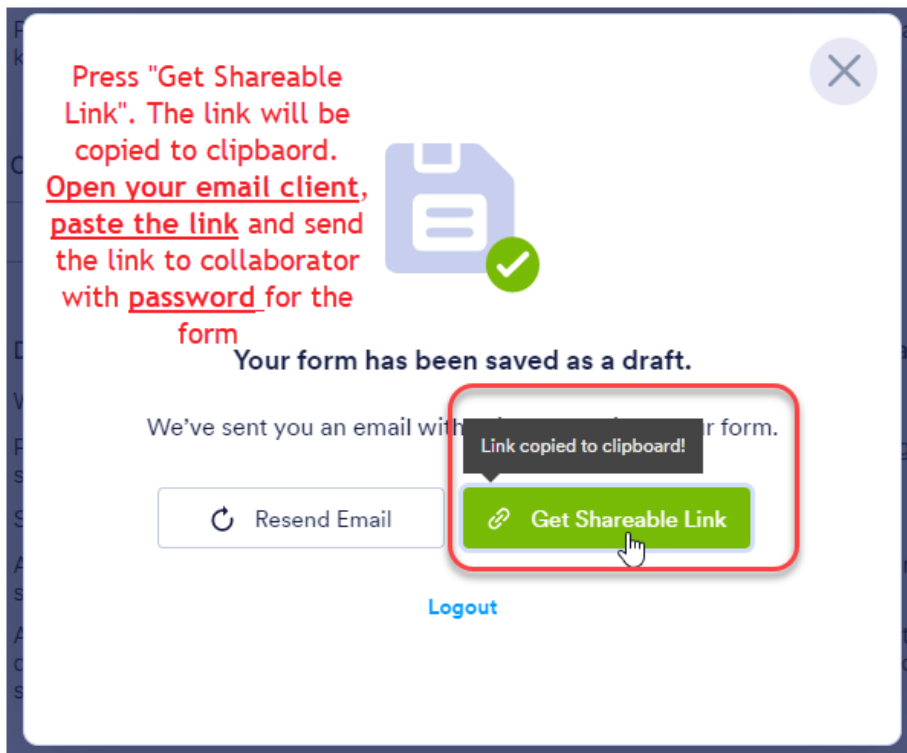
28. Does the provider ensure all operating system and software is kept up-to-date?

- We have no understanding of this cyber security concept
- Policy to keep operating system and software up-to-date is not in place. Operating system and software may be updated if required
- Some of the software that have automatic updates available are up-to-date
- Automatic updates are enabled on all software that allow. A plan to update operating system and major software systems is in place
- Automatic updates are enabled on all software that allow. Operating system is up-to-date. Major software updates are done by IT vendor as part of planned maintenance schedule. Security updates are implemented immediately

28. Other Information



Step 2: Press 'Get Shareable Link'. The link will be copied to the clipboard.



Step 3: **Open your email, paste the link and send it to your vendor/partner along with the password for the form. Ask them to let you know when they have filled in their entries.**